

COPYRIGHT NOTICE

This geotechnical log and its associated data (the Document) is licensed by the Queensland Department of Transport and Main Roads under the [Creative Commons Attribution 4.0 Licence](#) (CC BY 4.0). When reusing the Document, in whole or in part, please attribute the Department as follows: "*(c) State of Queensland (Department of Transport and Main Roads) 2020, licensed under the CC BY 4.0 Licence*". This licence does not apply to the Queensland Government logo or trademarks.

LIMITATION OF LIABILITY

The CC BY 4.0 Licence contains a comprehensive Disclaimer of Warranties and Limitation of Liability. In addition, please note that this Document was prepared for Departmental use only. Reuse of the Document by anyone for any other purpose could result in error and/or loss. You should obtain professional advice before making decisions based on the contents of the Document.

When reproducing any part of this Document, you must also reproduce this limitation of liability notice in addition to the italicised attribution statement above.

Retrieved from the Queensland Geotechnical Database <http://qgd.org.au/>

ENGINEERING BORELOG

FOR GEOTECHNICAL TERMS AND
SYMBOLS REFER FORM BQF 075:191/95

BOREHOLE No : 208
SHEET : 1 OF 1
REFERENCE No : H8153

PROJECT : SOUTH EAST TRANSIT BUS LANE PROJECT - SECTION 2
LOCATION : 3463.2E 163306.5N
PROJECT No : C60117 SURFACE R.L. : 14.60 DRILLER : DALY BROTHERS PTY LTD
JOB No : 650302CN DATUM : AHD DATE DRILLED : 3/12/97

| DEPTH (m) | R.L. (m) | AUGER CORE DRILLING CORE DRILLING Casing OTHER | RQD (%) | CORE REC% | SAMPLE | MATERIAL DESCRIPTION | USC WEATHERING | INTACT STRENGTH | DEFECT SPACING (mm) | GRAPHIC LOG | ADDITIONAL DATA AND TEST RESULTS | SAMPLES TESTS |
|-----------|----------|---|---------|-----------|--------|---|----------------|-----------------|---------------------|-------------|--|---------------|
| 0 | 14.60 | | | | | | | | | | | |
| 1 | 14.40 | | | | | BITUMEN AND SUBBASE GRAVEL FILL Pale grey to pale brown, dry to moist, very loose to loose silty sandy gravel. Angular to subangular sand to gravel size particles throughout. | GM | | | | Driller's log only | |
| 2 | | | | | | | GM | | | | 2, 2, 2 N=4 | SPT |
| 3 | | | | | | | | | | | 4, 3, 3 N=6 | SPT |
| 4 | 11.35 | | | | | SILTY CLAY Pale grey to pale brown, moist, very stiff to hard. Frequent milky quartz gravels and orange to red brown mottled zones; iron concretion throughout; grading from high plasticity to low plasticity. | CH | | | | 8, 2, 4 N=6 | SPT |
| 5 | | | | | | | | | | | 8, 11, 17 N=28 | SPT |
| 6 | 8.85 | | | | | ARENITE WHITE GREY TO GREY MEDIUM GRAINED MASSIVE METASEDIMENTARY ROCK. XW ARANITE Generally exhibits engineering properties of grey brown to yellow brown moist, hard gravelly silty sand. Frequent yellow to red brown mottled zones; occasional iron concretion. | XW | | | | 7, 12, 18 N=30 | SPT |
| 7 | | | | | | | | | | | 27, 30/120 N=>50 | SPT |
| 8 | 6.00 | | | | | | | | | | 20, 31, 31 N=62 | SPT |
| 9 | 5.10 | | | | | HW ARENITE Grey to green grey, frequent core stones and rock kernels, friable in most places. | HW | | | | CORE LOSS | |
| 10 | | | | | | END OF HOLE | | | | | F/D=132/64 Is(50)=0.09MPa F/D=143/72 | x |

REMARKS : Overall strength appears to be very low HW rock. Some of the defect data were extracted from BIPS.

LOGGED BY
DISS

BUS TRANSIT TUNNEL - PACKAGE TWO

HOLE 208
START 8:00
END 9:50

H 8153
1 OF 1
DEC 1997

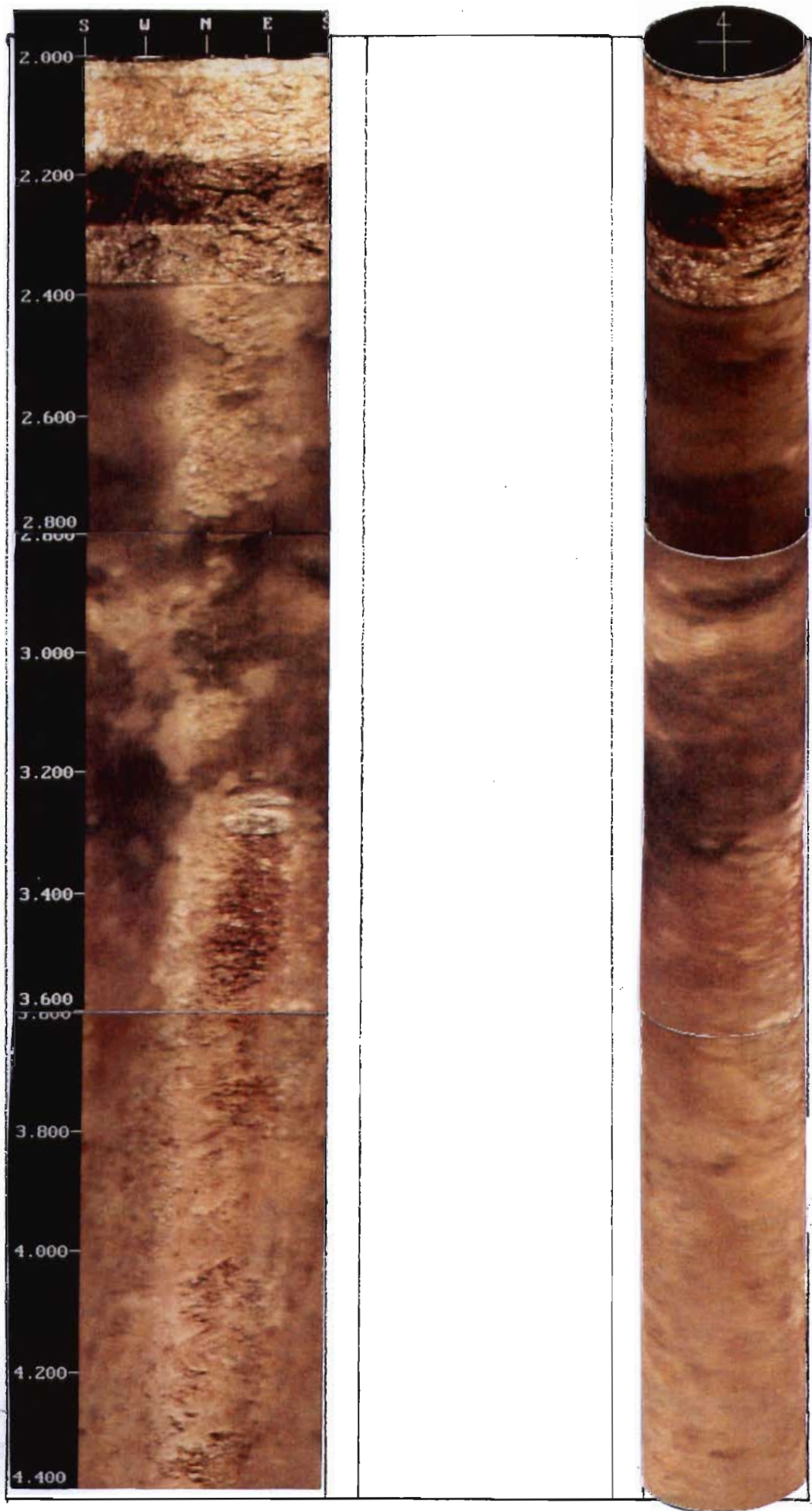
C60117

START 8.00m

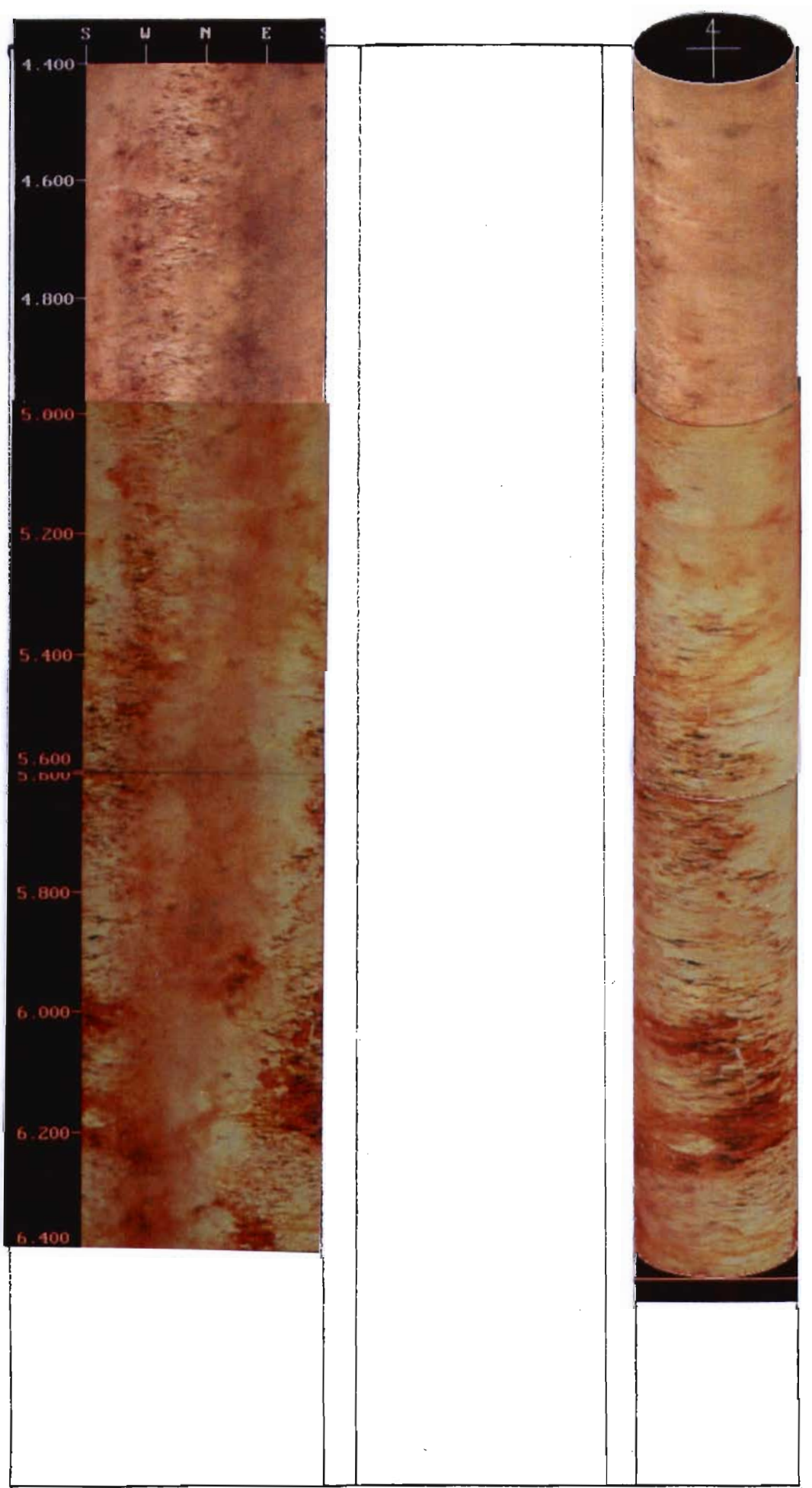
| | | |
|---|------------------|--------|
| 8 | CORE LOSS 0.600m | SPACER |
| 9 | END OF HOLE | |
| | | |
| | | |
| | | |
| | | |
| | | |
| | | |



SOUTH EAST TRANSIT PROJECT
BH 208 2.00 - 4.40 M

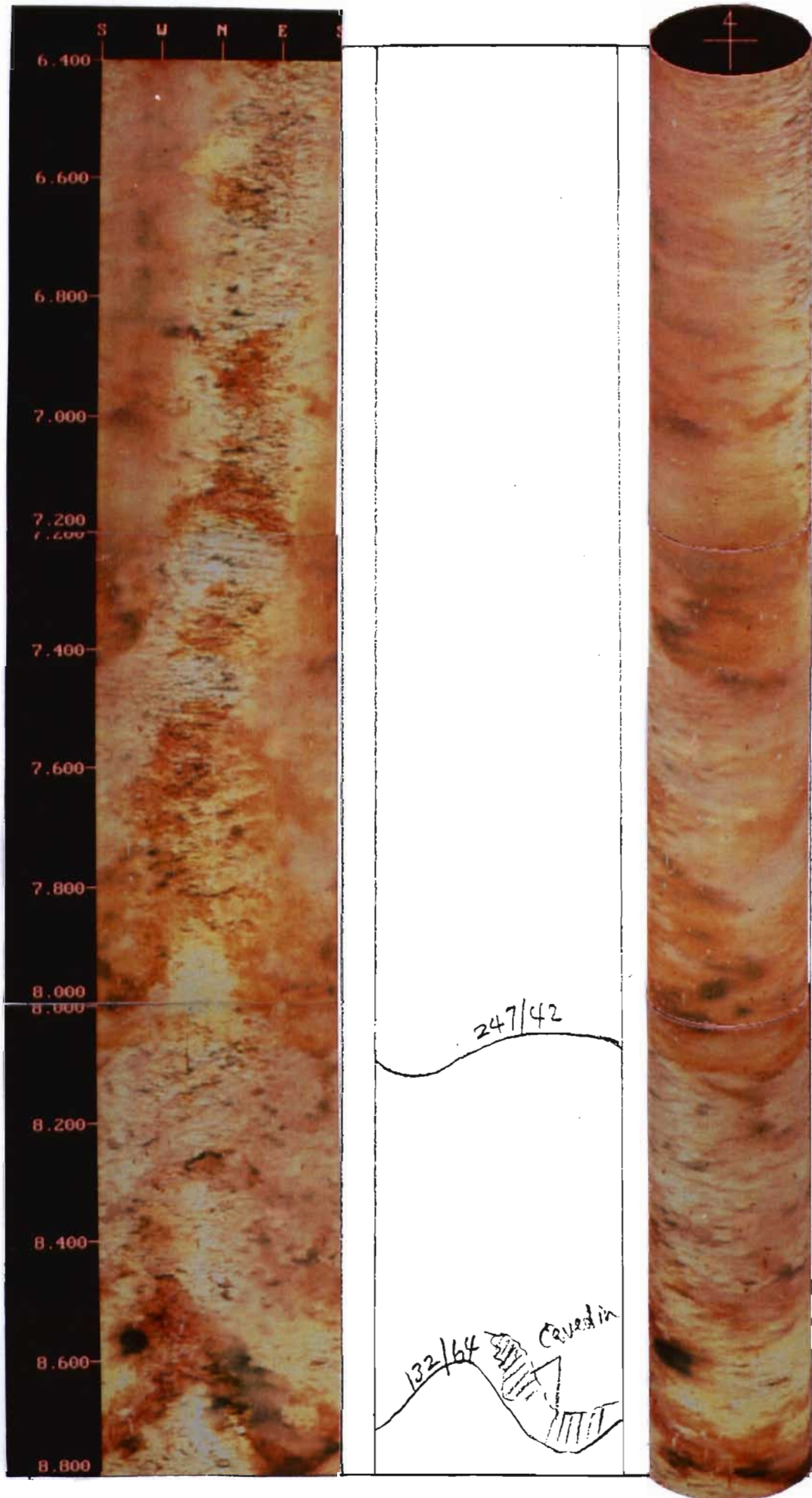


SOUTH EAST TRANSIT PROJECT
BH 208 4.40 - 6.40 M



SOUTH EAST TRANSIT PROJECT

BH 208 6.40 - 8.80 M



SOUTH EAST TRANSIT PROJECT
BH 208 8.80 - 9.40 M

