

COPYRIGHT NOTICE

This geotechnical log and its associated data (the Document) is licensed by the Queensland Department of Transport and Main Roads under the [Creative Commons Attribution 4.0 Licence](#) (CC BY 4.0). When reusing the Document, in whole or in part, please attribute the Department as follows: "*(c) State of Queensland (Department of Transport and Main Roads) 2020, licensed under the CC BY 4.0 Licence*". This licence does not apply to the Queensland Government logo or trademarks.

LIMITATION OF LIABILITY

The CC BY 4.0 Licence contains a comprehensive Disclaimer of Warranties and Limitation of Liability. In addition, please note that this Document was prepared for Departmental use only. Reuse of the Document by anyone for any other purpose could result in error and/or loss. You should obtain professional advice before making decisions based on the contents of the Document.

When reproducing any part of this Document, you must also reproduce this limitation of liability notice in addition to the italicised attribution statement above.

Retrieved from the Queensland Geotechnical Database <http://qgd.org.au/>

ENGINEERING BORELOG

FOR GEOTECHNICAL TERMS AND
SYMBOLS REFER FORM F873 NOV/87

BOREHOLE No : 16
SHEET : 1 OF 5
REFERENCE No : H7375

PROJECT : GATEWAY ARTERIAL DUPLICATION - DEAGON - OVERBRIDGE FOUNDATION INVESTIGATION
LOCATION : Grid Ref. 37718 E, 48399 N
PROJECT No : MG0246 SURFACE R.L. : 6.00 DRILLER : Schneider - Richard
JOB No : DATUM : AHD DATE DRILLED : 8/2/94

| DEPTH (m) | R.L. (m) | AUGER CORE DRILLING CASING OTHER | RQD (%) CORE REC% | CORE LOSS | MATERIAL DESCRIPTION | USC WEATHERING | INTACT STRENGTH | DEFECT SPACING (mm) | GRAPHIC LOG | ADDITIONAL DATA AND TEST RESULTS | SAMPLES TESTS |
|-----------|----------|---|----------------------------|-----------|--|-------------------|--------------------|---------------------------|-------------|--|------------------|
| 0 | 6.00 | | | | | | | | | | |
| 1 | | | | | CLAY Grey, with red brown mottling (ironstaining) in part, moist, generally very stiff, high plasticity; fissuring and slickensides common; firm to stiff near surface. | | | | | 1,2,3 N=5 | SPT |
| 2 | | | | | | | | | | | |
| 3 | | | | | | | | | | MC=34.2%, WD=1.9t/m3 C=137kPa, ϕ =4.5deg | U48 |
| 4 | | | | | | | | | | | |
| 5 | | | | | | | | | | | |
| 6 | | | | | | | | | | 3,4,7 N=10 | SPT |
| 7 | | | | | | | | | | | |
| 8 | | | | | | | | | | | |
| 9 | | | | | | | | | | MC=36.8%, WD=1.86t/m3 | U48 |
| 10 | -4.00 | | | | | | | | | | |

REMARKS : All U48 tubes (except for the deepest 2) were pushed 400mm, only
recovered portions shown. OTHER - washboring. WD=Wet density

LOGGED BY



ENGINEERING
BORELOG

FOR GEOTECHNICAL TERMS AND
SYMBOLS REFER FORM F873 NOV/87

BOREHOLE No : 16

SHEET : 2 OF 5

REFERENCE No : H7375

PROJECT : GATEWAY ARTERIAL DUPLICATION - DEAGON - OVERBRIDGE FOUNDATION INVESTIGATION

LOCATION : Grid Ref. 37718 E, 48399 N

PROJECT No : MG0246

SURFACE R.L. : 6.00

DRILLER : Schneider - Richard

JOB No :

DATUM : AHD

DATE DRILLED : 8/2/94

| DEPTH (m) | R.L. (m) | AUGER CORE DRILLING CASING OTHER | RQD (%) CORE REC% | CORE LOSS | MATERIAL DESCRIPTION | USC WEATHERING | INTACT STRENGTH | DEFECT SPACING (mm) | GRAPHIC LOG | ADDITIONAL DATA AND TEST RESULTS | SAMPLES |
|-----------|----------|---|--------------------------------|-----------|-------------------------|-------------------|--------------------|---------------------------|-------------|---|---------|
| | | | | | | | | | | | |
| 10 | -4.00 | | | | CLAY (Cont'd) | | | | | | |
| 11 | | | | | | | | | | | |
| 12 | | | | | | | | | | 5,8,14 N=22 | SPT |
| 13 | | | | | | | | | | | |
| 14 | | | | | | | | | | | |
| 15 | | | | | | | | | | MC=35.6%, WD=1.88t/m3 C=231kPa, ϕ =3.5 degs | U48 |
| 16 | | | | | | | | | | | |
| 17 | | | | | | | | | | | |
| 18 | | | | | | | | | | 8,11,14 N=25 | SPT |
| 19 | | | | | | | | | | | |
| 20 | -14.00 | | | | | | | | | | |

REMARKS :

LOGGED BY

ENGINEERING BORELOG

FOR GEOTECHNICAL TERMS AND
SYMBOLS REFER FORM F873 NOV/87

BOREHOLE No : 16
SHEET : 3 OF 5
REFERENCE No : H7375

PROJECT : GATEWAY ARTERIAL DUPLICATION - DEAGON - OVERBRIDGE FOUNDATION INVESTIGATION
LOCATION : Grid Ref. 37718 E, 48399 N
PROJECT No : MGO246 SURFACE R.L. : 6.00 DRILLER : Schneider - Richard
JOB No : DATUM : AHD DATE DRILLED : 8/2/94

| DEPTH (m) | R.L. (m) | AUGER CORE DRILLING CASING OTHER | RQD (%) CORE REC% | CORE LOSS | MATERIAL DESCRIPTION | USC WEATHERING | INTACT STRENGTH | DEFECT SPACING (mm) | GRAPHIC LOG | ADDITIONAL DATA AND TEST RESULTS | SAMPLES TESTS |
|-----------|----------|---|----------------------------|-----------|-------------------------|-------------------|--------------------|---------------------------|-------------|--|------------------|
| 20 | -14.00 | | | | CLAY (Cont'd) | | | | | MC=31.6%, WD=1.9t/m ³ | U48 |
| 21 | | | | | | | | | | | |
| 22 | | | | | | | | | | | |
| 23 | | | | | | | | | | | |
| 24 | | | | | | | | | | 9,13,20 N=33 | SPT |
| 25 | | | | | | | | | | | |
| 26 | | | | | | | | | | | |
| 27 | | | | | | | | | | MC=32.4%, WD=1.9t/m ³ C=59kPa, ϕ =17 degs | U48 |
| 28 | | | | | | | | | | | |
| 29 | | | | | | | | | | | |
| 30 | -24.00 | | | | | | | | | 8,11,16 N=27 | SPT |

REMARKS :

LOGGED BY

ENGINEERING BORELOG

FOR GEOTECHNICAL TERMS AND
SYMBOLS REFER FORM F873 NOV/87

BOREHOLE No : 16
SHEET : 4 OF 5
REFERENCE No : H7375

PROJECT : GATEWAY ARTERIAL DUPLICATION - DEAGON - OVERBRIDGE FOUNDATION INVESTIGATION
LOCATION : Grid Ref. 37718 E, 48399 N
PROJECT No : MG0246 SURFACE R.L. : 6.00 DRILLER : Schneider - Richard
JOB No : DATUM : AHD DATE DRILLED : 8/2/94

| DEPTH (m) | R.L. (m) | USER CORE DRILLING CASING OTHER | RQD (%) | CORE REC% | CORE LOSS | MATERIAL DESCRIPTION | USC WEATHERING | INTACT STRENGTH | DEFECT SPACING (mm) | GRAPHIC LOG | ADDITIONAL DATA AND TEST RESULTS | SAMPLES TESTS |
|-----------|----------|---------------------------------|---------|-----------|-----------|--|----------------|-----------------|---------------------|-------------|----------------------------------|---------------|
| 30 | -24.00 | | | | | | | | | | | |
| 31 | | | | | | BASALT DARK GREY, FINE GRAINED VOLCANIC ROCK. XW - dark grey to blue grey, red brown ironstained in parts; generally exhibits engineering properties of hard, high plasticity silty clay to sandy clayey silt. | | | | | | |
| 32 | | | | | | | | | | | | |
| 33 | | | | | | | | | | | MC=34% | U48 |
| 34 | | | | | | | | | | | | |
| 35 | | | | | | | XW | | | | | |
| 36 | | | | | | | | | | | 10,18,27 N=45 | SPT |
| 37 | | | | | | | | | | | | |
| 38 | | | | | | | | | | | | |
| 39 | -32.50 | | | | | HW - defects ironstained and clay infilled. | HW | | | | 30/65 | SPT |
| 40 | | | 100 | | | | XW | | | | | |

REMARKS :

LOGGED BY



ENGINEERING
BORELOG

FOR GEOTECHNICAL TERMS AND
SYMBOLS REFER FORM F873 NOV/87

BOREHOLE No : 16
SHEET : 5 OF 5
REFERENCE No : H7375

PROJECT : GATEWAY ARTERIAL DUPLICATION - DEAGON - OVERBRIDGE FOUNDATION INVESTIGATION
LOCATION : Grid Ref. 37718 E, 48399 N
PROJECT No : MG0246 SURFACE R.L. : 6.00 DRILLER : Schneider - Richard
JOB No : DATUM : AHD DATE DRILLED : 8/2/94

| DEPTH (m) | R.L. (m) | AUGER CORING DRILLING CASSING OTHER | RQD (%) CORE REC% | CORE LOSS | MATERIAL DESCRIPTION | USC WEATHERING | INTACT STRENGTH | DEFECT SPACING (mm) | GRAPHIC LOG | ADDITIONAL DATA AND TEST RESULTS | SAMPLES TESTS |
|-----------|----------|---|--------------------------------|-----------|-------------------------|-------------------|--------------------|---------------------------|-------------|--|------------------|
| 40 | -34.00 | | | | | | | | | | |
| | | | 76 | | BASALT (Cont'd) | | | | | | |
| 41 | -35.37 | | 100 | | | XW | | | | | |
| | | | | | END OF HOLE | | | | | | |
| 42 | | | | | | | | | | | |
| 43 | | | | | | | | | | | |
| 44 | | | | | | | | | | | |
| 45 | | | | | | | | | | | |
| 46 | | | | | | | | | | | |
| 47 | | | | | | | | | | | |
| 48 | | | | | | | | | | | |
| 49 | | | | | | | | | | | |
| 50 | | | | | | | | | | | |

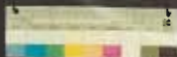
REMARKS :

LOGGED BY
R. Dev.

GATEWAY DUPLICATION - DEACON F.I.

HOLE 16
START
38'56 M

H 7375
1 OF 1
MARCH 1994



39

40

41

MR 50