

## **COPYRIGHT NOTICE**

This geotechnical log and its associated data (the Document) is licensed by the Queensland Department of Housing and Public Works under the [Creative Commons Attribution 4.0 Licence](https://creativecommons.org/licenses/by/4.0/) (CC BY 4.0). When reusing the Document, in whole or in part, please attribute the Department and author as follows: "(c) State of Queensland (Department of Housing and Public Works) 2020, licensed under the CC BY 4.0 Licence, prepared by Arup". This licence does not apply to logos or trademarks.




## **LIMITATION OF LIABILITY**

The CC BY 4.0 Licence contains a comprehensive Disclaimer of Warranties and Limitation of Liability. In addition, please note that this Document was prepared for Departmental use only. Reuse of the Document by anyone for any other purpose could result in error and/or loss. You should obtain professional advice before making decisions based on the contents of the Document.

When reproducing any part of this Document, you must also reproduce this limitation of liability notice in addition to the italicised attribution statement above.

Retrieved from the Queensland Geotechnical Database <http://ggd.org.au/>

This log has been contributed to the Queensland Geotechnical Database with the permission of Arup.

		BOREHOLE RECORD				HOLE <span style="font-size: 1.5em;">BH28</span>		SHEET 1 OF 3									
PROJECT: LANG PARK REDEVELOPMENT						LOGGED BY: VL											
DATE/S: 18.11.00						GROUND LEVEL: ~RL 15.2m											
CONTRACTOR: SP & KF Christensen		ANGLE: Vertical		DRILL MODEL: Jacro 350		BEARING: -		LOCATION: Refer Borehole Plan									
MOUNTING: 4WD Truck		DIAMETER: 50/75/100mm															
DRILLING		STRATA		MATERIAL DESCRIPTION		CONDITION		OBSERVATION									
SAMPLE, TEST, BIT, SUPPORT, ETC.	R.L.	DEPTH	GROUP SYMBOL	LEGEND	SOIL TYPE Colour, Plasticity, Grain Size, Minor Components	WATER / MOISTURE	CONSISTENCY								SOIL ORIGIN, STRUCTURE, ETC.		
	AHD	m					COHESIVE				NON COHESIVE						
							VS	SL	ST	HT	VL	LD	MD	VD			
SPT @ 1.5m 19 / 30, 100mm N = Refusal  SPT @ 3.0m 30, 75mm N = Refusal  SPT @ 4.5m 20 / 30, 105mm N = Refusal	14.50	0.70			Silty sandy GRAVEL: grey brown, some railway ballast	W											FILL
	13.70	1.50					CLAY: grey, dark grey, yellow/orange brown										
				becoming stiffer (driller's description)												XW ROCK	
				XW ROCK: Dark grey to brown with some grey to dark grey clay, properties similar to hard clay quartz seam													
				becoming grey with orange brown bands													
				grey to dark grey and orange, some quartz seams													
	9.95	5.25															
NOTES  1) No groundwater encountered prior to washboring at 1.5m, but wet clay layer between 0.4m and 0.7m, probably due to heavy rain overnight.						JOB  <div style="font-size: 1.5em; font-weight: bold;">12215</div>											

BOREHOLE/TEST PIT LANGP2.GPJ ARUP AUS.GDT 03/01/01

ARUP Geotechnics		CORED BOREHOLE RECORD										HOLE BH28		SHEET 2 OF 3		
PROJECT LANG PARK REDEVELOPMENT												LOGGED BY VL				
CONTRACTOR SP & KF Christensen												DATE/S 18.11.00				
DRILL MODEL Jacro 350												GROUND LEVEL ~RL 15.2m				
MOUNTING 4WD Truck												LOCATION Refer Borehole Plan				
DRILLING			STRATA			MATERIAL DESCRIPTION							DISCONTINUITIES			
CASING RUN, REC. (%)	WATER	SAMPLE TEST	R.L.	DEPTH	LEGEND	ROCK TYPE Colour, Grain Size, Structure, Minor Components	WEATHERING	ESTIMATED ROCK STRENGTH			FREQUENCY (per m)	SPECIFIC			GENERAL DESCRIPTION	
			AHD	m				EL	M	EH		1	3	10		30
				1												
				2												
				3												
				4												
				5												
				6		META-ARGILLITE: Mottled grey, dark grey and orange brown	XW									
				7		weathered rock expanding due to high clay content	XW/DW									
				8		META-ARGILLITE: Dark grey, light grey, orange and cream coloured bands	XW									
			7.20	8.00												
NOTES							TYPE OF DISCONTINUITY					JOB				
1) No groundwater encountered prior to washboring at 1.5m, but wet clay layer between 0.4m and 0.7m, probably due to heavy rain overnight.							Jo JOINT Be BEDDING PLANE PARTING Fo FOLIATION PARTING Cl CLAY SEAM We WEATHERED SEAM Cr CRUSHED SEAM Sh SHEARED ZONE Qr QUARTZ SEAM					12215				

CORED BOREHOLE LANGP2.GPJ ARUP\_AUS.GDT 03/01/01

# CORED BOREHOLE RECORD

HOLE

**BH28**

SHEET 3

OF 3

PROJECT LANG PARK REDEVELOPMENT

LOGGED BY VL

DATE/S 18.11.00

CONTRACTOR SP & KF Christensen

ANGLE Vertical

DRILL MODEL Jacro 350


BEARING -

GROUND LEVEL ~RL 15.2m

MOUNTING 4WD Truck

DIAMETER 50/75/100mm

LOCATION Refer Borehole Plan

DRILLING			STRATA			MATERIAL DESCRIPTION										DISCONTINUITIES			
CASING RUN REC. (%)	WATER	SAMPLE TEST	R.L.	DEPTH	LEGEND	ROCK TYPE Colour, Grain Size, Structure, Minor Components	WEATHERING	ESTIMATED ROCK STRENGTH			FREQUENCY (per m)	SPECIFIC			GENERAL DESCRIPTION				
			AHD	m				EL	M	EH		1	3	10	30	TYPE	ANGLE	THICKNESS (mm)	Planarity, Roughness, Coating, Infill
100%				9		META-ARGILLITE: dark grey, light grey, orange and cream coloured bands	XW												
100%				10		Dark grey with some orange brown banding													
100%				11															
			3.50	11.70															
				12															
				13															
				14															
				15															
NOTES							TYPE OF DISCONTINUITY								JOB				
1) No groundwater encountered prior to washboring at 1.5m, but wet clay layer between 0.4m and 0.7m, probably due to heavy rain overnight.							Jo JOINT Be BEDDING PLANE PARTING Fo FOLIATION PARTING Cl CLAY SEAM We WEATHERED SEAM Cr CRUSHED SEAM Sh SHEARED ZONE Qr QUARTZ SEAM								12215				

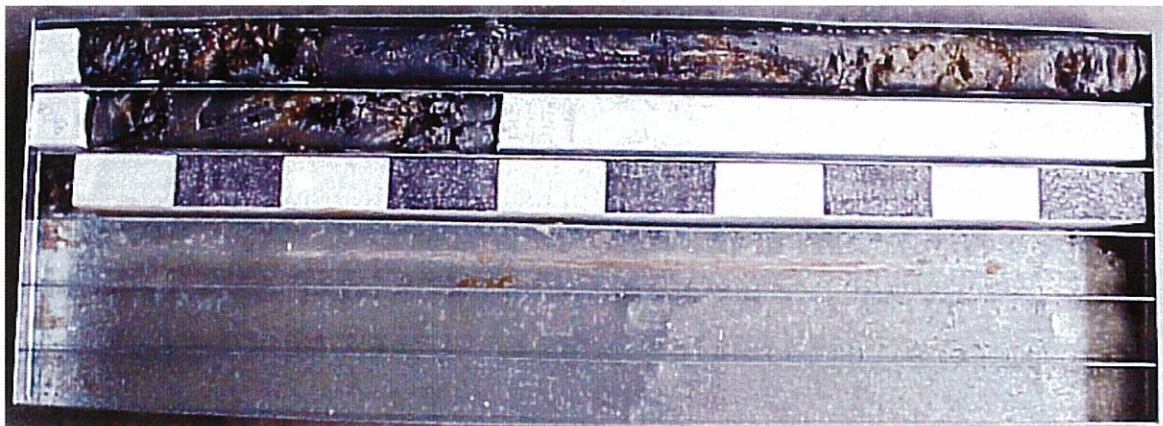
CORED BOREHOLE LANGP2.GPJ ARUP\_AUS.GDT 03/01/01



**Borehole BH28**

**5.25m - 10.30m**

**Box 1 of 2**



**Borehole BH28**

**10.30m - 11.70m**

**Box 2 of 2**