

COPYRIGHT NOTICE

This geotechnical log and its associated data (the Document) is licensed by the Queensland Department of Transport and Main Roads under the [Creative Commons Attribution 4.0 Licence](#) (CC BY 4.0). When reusing the Document, in whole or in part, please attribute the Department as follows: "*(c) State of Queensland (Department of Transport and Main Roads) 2020, licensed under the CC BY 4.0 Licence*". This licence does not apply to the Queensland Government logo or trademarks.

LIMITATION OF LIABILITY

The CC BY 4.0 Licence contains a comprehensive Disclaimer of Warranties and Limitation of Liability. In addition, please note that this Document was prepared for Departmental use only. Reuse of the Document by anyone for any other purpose could result in error and/or loss. You should obtain professional advice before making decisions based on the contents of the Document.

When reproducing any part of this Document, you must also reproduce this limitation of liability notice in addition to the italicised attribution statement above.

Retrieved from the Queensland Geotechnical Database <http://qgd.org.au/>



**Queensland
Government**

Department of
Main Roads

TEST PIT LOG

FOR GEOTECHNICAL TERMS AND
SYMBOLS REFER FORM F:GEOT 017/5-2009

FEATURE No TP008

SHEET 1 of 1

DATE EXCAVATED 16/09/09

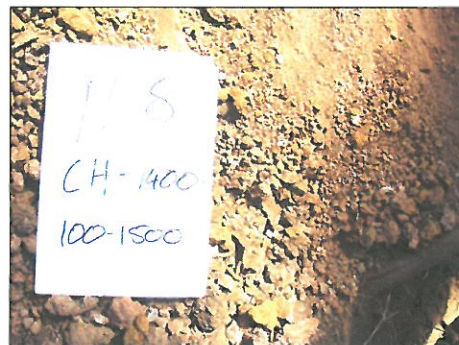
PROJECT Bruce Highway Cooroy to Curra Section A Geotechnical Investigation

LOCATION Cut 3 COORDINATES 489989.6 E; 7077500.6 N

PROJECT No FG5825 SURFACE R.L. 122.30 DATUM AHD SYSTEM MGA94

JOB No 128/10A/901 EQUIPMENT TYPE AND MODEL JCB BACKHOE BUCKET SIZE 450mm

DEPTH (m)	R.L. (m)	METHOD BUCKET	USC WEATHERING	SOIL DESCRIPTION SOIL TYPE : Colour, grain size, plasticity or particle characteristics, moisture, consistency, density, secondary components	VDCP LOG (Cone Resistance) (MPa) 0 4 8 12 16>20	ADDITIONAL DATA AND TEST RESULTS	SAMPLE NUMBER	TEST REPORT
				ROCK DESCRIPTION Type, colour, grain characteristics, weathering, strength, structure, inclusions				
0	122.30			Topsoil				
	122.20			Gravelly SILT Mottled grey grey/brown, high plasticity. Gravel - fine grained, angular to subangular, medium to high strength, blue grey, some white quartz. Dry to moist, hard.		Organic material to 600mm depth LL = 52; PI = 23; LS = 13.6; MC = 14.9%; WPI 1373	09G1456	22156
1			MH			Black Fe & Mg staining from 1.3m to 1.7m		
	120.80			Clayey GRAVEL with some sand Mottled yellowish brown/pale grey, high plasticity. Gravel - medium to fine grained, subangular, very high strength, red and white, some quartz. Sand - coarse. Moist, very stiff to hard.		LL = 52; PI = 24; LS = 11.6; MC = 11.9%; WPI 1166	09G1457	22153
2			GC			PP(UCS) 383kPa		
	119.20			Excavation terminated at 3.1m				
3								
4	118.30							



REMARKS Pit terminated at 3.1m due to insufficient room for backhoe to work. PP = Pocket penetrometer

LOGGED BY
RK/GB P.Simson

OLD_DMR_LIB_01_GLB_Log_A_TEST PIT LOG FG5825 BRUCE HWY COOROY-CURRA SECTION A TFS.GPJ DWG02759.GDW Date: CPT Tool gl/N Add-in: 24/06/2010 17:28