

COPYRIGHT NOTICE

This geotechnical log and its associated data (the Document) is licensed by the Queensland Department of Transport and Main Roads under the [Creative Commons Attribution 4.0 Licence](#) (CC BY 4.0). When reusing the Document, in whole or in part, please attribute the Department as follows: "*(c) State of Queensland (Department of Transport and Main Roads) 2020, licensed under the CC BY 4.0 Licence*". This licence does not apply to the Queensland Government logo or trademarks.

LIMITATION OF LIABILITY

The CC BY 4.0 Licence contains a comprehensive Disclaimer of Warranties and Limitation of Liability. In addition, please note that this Document was prepared for Departmental use only. Reuse of the Document by anyone for any other purpose could result in error and/or loss. You should obtain professional advice before making decisions based on the contents of the Document.

When reproducing any part of this Document, you must also reproduce this limitation of liability notice in addition to the italicised attribution statement above.

Retrieved from the Queensland Geotechnical Database <http://qgd.org.au/>



**Queensland
Government**

Department of
Main Roads

TEST PIT LOG

FOR GEOTECHNICAL TERMS AND
SYMBOLS REFER FORM F:GEOT 017/5-2009

FEATURE No TP053

SHEET 1 of 1

DATE EXCAVATED 20/08/09

PROJECT Bruce Highway Cooroy to Curra Section A Geotechnical Investigation

LOCATION Embankment 14

COORDINATES 483865.8 E; 7081343.4 N

PROJECT No FG5825

SURFACE R.L. 112.13

DATUM AHD

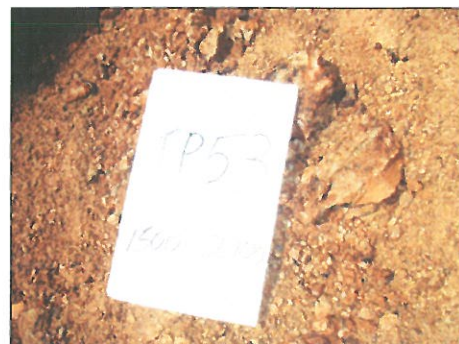
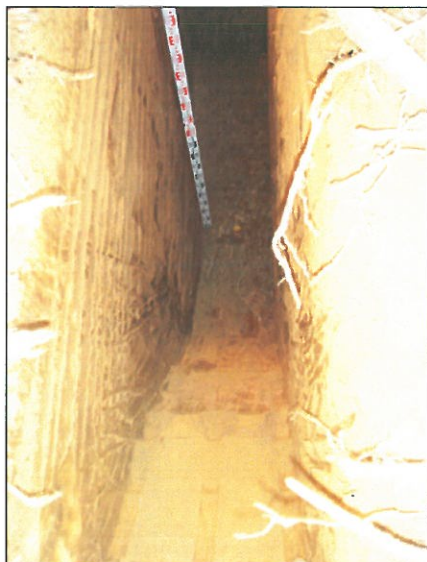
SYSTEM MGA94

JOB No 128/10A/901

EQUIPMENT TYPE AND MODEL JCB BACKHOE

BUCKET SIZE 450mm

DEPTH (m)	R.L. (m)	METHOD	USC WEATHERING	SOIL DESCRIPTION SOIL TYPE : Colour, grain size, plasticity or particle characteristics, moisture, consistency, density, secondary components	VDCP LOG (Cone Resistance)	ADDITIONAL DATA AND TEST RESULTS	SAMPLE NUMBER	TEST REPORT
				ROCK DESCRIPTION ROCK SUBSTANCE : Type, colour, grain characteristics, weathering, strength, structure, inclusions	VDCP 32 (MPa)			
0	112.13	BUCKET	USC	Topsoil Light grey-brown	0 4 8 12 16 >20	Some grass roots LL = 54; PI = 21; LS = 12; MC = 22.6%; WPI 1638	09G1373	22197
0	112.08			Sandy SILT Light yellowish brown, high plasticity. Sand - coarse. Moist, hard.				
1	110.63			MH				
2	109.43	GM	GM	XW Phyllite; Gravelly SILT Mottled red-brown and black, high plasticity, hard, moist. Gravel - angular, low to medium strength, medium to coarse grained, Fe stained, black and red.		PP(UCS) 593kPa MC = 20.3%	09G1374	
3	109.13			HW Phyllite; Silty GRAVEL Mottled reddish brown & grey, medium plasticity. Moist, hard. Gravel, as above.		PP(UCS) >600kPa MC = 22.3% PP(UCS) >600kPa		
4	108.13			Excavation terminated at 3m				



REMARKS PP = Pocket penetrometer

LOGGED BY
RW/GB P.Simson