

## **COPYRIGHT NOTICE**

This geotechnical log and its associated data (the Document) is licensed by the Queensland Department of Transport and Main Roads under the [Creative Commons Attribution 4.0 Licence](#) (CC BY 4.0). When reusing the Document, in whole or in part, please attribute the Department as follows: "*(c) State of Queensland (Department of Transport and Main Roads) 2020, licensed under the CC BY 4.0 Licence*". This licence does not apply to the Queensland Government logo or trademarks.

## **LIMITATION OF LIABILITY**

The CC BY 4.0 Licence contains a comprehensive Disclaimer of Warranties and Limitation of Liability. In addition, please note that this Document was prepared for Departmental use only. Reuse of the Document by anyone for any other purpose could result in error and/or loss. You should obtain professional advice before making decisions based on the contents of the Document.

When reproducing any part of this Document, you must also reproduce this limitation of liability notice in addition to the italicised attribution statement above.

Retrieved from the Queensland Geotechnical Database <http://qgd.org.au/>

# ENGINEERING BOREHOLE LOG

FOR GEOTECHNICAL TERMS AND  
SYMBOLS REFER FORM F:GEOT 017/7-2014

BOREHOLE No BH2A  
SHEET 1 of 5  
REFERENCE No 11526

PROJECT Mt Whitestone: Slope Instability Investigation - Preliminary Inclinator Boreholes  
LOCATION Gatton-Clifton Rd, RHS table drain, approx Ch 15.22km COORDINATES 416202.9 E; 6937824.3 N  
PROJECT No FG6128 SURFACE R.L. 215.63m PLUNGE \_\_\_\_\_ DATE STARTED 27/11/13 GRID DATUM MGA94  
JOB No \_\_\_\_\_ HEIGHT DATUM AHD BEARING \_\_\_\_\_ DATE COMPLETED 2/12/13 DRILLER Northcoast

DEPTH (m)	R.L. (m)	AUGER CASING WASH BORING CORE DRILLING	RQD ( ) %	CORE REC %	SAMPLE	MATERIAL DESCRIPTION	LITHOLOGY	USC WEATHERING	INTACT STRENGTH (AS1726)										DEFECT SPACING (AS1726)										GRAPHIC LOG	ADDITIONAL DATA AND TEST RESULTS		SAMPLES	TESTS																																																																																																																																																																																																																																																																																																																																																																																																																																																																																																																																																																																																																																																																																																																																																																																																																																																																																																																																																																																																																																																																																																																																																																																																																																																																																																																																																																																																																									
									EH VH I M J VL EL EC VC W VW EW																																																																																																																																																																																																																																																																																																																																																																																																																																																																																																																																																																																																																																																																																																																																																																																																																																																																																																																																																																																																																																																																																																																																																																																																																																																																																																																																																																																																																																																	
0	215.63																																																																																																																																																																																																																																																																																																																																																																																																																																																																																																																																																																																																																																																																																																																																																																																																																																																																																																																																																																																																																																																																																																																																																																																																																																																																																																																																																																																																																																																									

REMARKS \*See point load test results for details of this test

LOGGED BY  
TAH

# ENGINEERING BOREHOLE LOG

FOR GEOTECHNICAL TERMS AND  
SYMBOLS REFER FORM F:GEOT 017/7-2014

BOREHOLE No   BH2A    
SHEET   2   of   5    
REFERENCE No   11526  

PROJECT Mt Whitestone: Slope Instability Investigation - Preliminary Inclinator Boreholes  
LOCATION Gatton-Clifton Rd, RHS table drain, approx Ch 15.22km COORDINATES 416202.9 E; 6937824.3 N  
PROJECT No FG6128 SURFACE R.L. 215.63m PLUNGE \_\_\_\_\_ DATE STARTED 27/11/13 GRID DATUM MGA94  
JOB No \_\_\_\_\_ HEIGHT DATUM AHD BEARING \_\_\_\_\_ DATE COMPLETED 2/12/13 DRILLER Northcoast

DEPTH (m)	R.L. (m)	AUGER CASING WASH BORING CORE DRILLING	RQD ( ) %	CORE REC %	SAMPLE	MATERIAL DESCRIPTION	LITHOLOGY	USC WEATHERING	INTACT STRENGTH (AS1726)	DEFECT SPACING (AS1726)	GRAPHIC LOG	ADDITIONAL DATA AND TEST RESULTS	SAMPLES TESTS
10	205.63												
11						Sandy CLAY (COLLUVIUM) (Cont'd)							
12					D							11,29,30/110	SPT
13													
14													
15					E	Sub angular rock fragments sized to 35mm.	(Cl)					11,20,30/110	SPT
16													
17													
18					F	Varies to silty CLAY in parts with angular gravel and iron concretions sized to 15mm.						4,9,10	SPT
19													
20													

REMARKS \*See point load test results for details of this test

LOGGED BY  
TAH

# ENGINEERING BOREHOLE LOG

FOR GEOTECHNICAL TERMS AND  
SYMBOLS REFER FORM F:GEOT 017/7-2014

BOREHOLE No BH2A  
SHEET 3 of 5  
REFERENCE No 11526

PROJECT Mt Whitestone: Slope Instability Investigation - Preliminary Inclinator Boreholes  
LOCATION Gatton-Clifton Rd, RHS table drain, approx Ch 15.22km COORDINATES 416202.9 E; 6937824.3 N  
PROJECT No FG6128 SURFACE R.L. 215.63m PLUNGE \_\_\_\_\_ DATE STARTED 27/11/13 GRID DATUM MGA94  
JOB No \_\_\_\_\_ HEIGHT DATUM AHD BEARING \_\_\_\_\_ DATE COMPLETED 2/12/13 DRILLER Northcoast

DEPTH (m)	R.L. (m)	AUGER CASING WASH BORING CORE DRILLING	RQD ( ) %	SAMPLE	MATERIAL DESCRIPTION	LITHOLOGY	USC WEATHERING	INTACT STRENGTH (AS1726)	DEFECT SPACING (AS1726)	GRAPHIC LOG	ADDITIONAL DATA AND TEST RESULTS	SAMPLES TESTS
20	195.63											
21				G	Sandy CLAY (COLLUVIUM) (Cont'd)	(Cl)					10,19,21	SPT
22												
23												
24	191.83		(86)		Sandy CLAY with Cobbles and Boulders (COLLUVIUM) Yellow orange, moist, hard. With high strength rock fragments sized to 270mm.	(CL)						
25			100 (100)									
26			100 (82)									
27			100 (78)									
28			100 (100)									
29			100 (83)									
30												

REMARKS \*See point load test results for details of this test

LOGGED BY  
TAH

# ENGINEERING BOREHOLE LOG

FOR GEOTECHNICAL TERMS AND  
SYMBOLS REFER FORM F:GEOT 017/7-2014

BOREHOLE No BH2A  
SHEET 4 of 5  
REFERENCE No 11526

PROJECT Mt Whitestone: Slope Instability Investigation - Preliminary Inclinator Boreholes  
LOCATION Gatton-Clifton Rd, RHS table drain, approx Ch 15.22km COORDINATES 416202.9 E; 6937824.3 N  
PROJECT No FG6128 SURFACE R.L. 215.63m PLUNGE \_\_\_\_\_ DATE STARTED 27/11/13 GRID DATUM MGA94  
JOB No \_\_\_\_\_ HEIGHT DATUM AHD BEARING \_\_\_\_\_ DATE COMPLETED 2/12/13 DRILLER Northcoast

DEPTH (m)	R.L. (m)	AUGER CASING WASH BORING CORE DRILLING	RQD ( ) %	SAMPLE	MATERIAL DESCRIPTION	LITHOLOGY	USC WEATHERING	INTACT STRENGTH (AS1726)	DEFECT SPACING (AS1726)	GRAPHIC LOG	ADDITIONAL DATA AND TEST RESULTS	SAMPLES TESTS
30	185.63											
31			100 (90)		<b>Sandy CLAY with Cobbles and Boulders (COLLUVIUM) (Cont'd)</b>							
32			100 (83)			(CL)					Sandstone boulder in colluvium.	
33			100 (88)								Clay seam	
34	182.01		100 (60)		<b>SILTSTONE</b> Fine grained sedimentary rock composed of silt sized particles. HW: Grey to pale grey, fine grained, low to medium strength. Interbeds of medium grained sandstone, occasional coaliferous inclusions with relict shear zones. Defects: LP: 20° (4/m); PL/Ro-Sm, OP.		XW				Basalt fragments	
35	180.37		28 (91)		<b>MW:</b> Grey, fine grained, medium strength. Thinly laminated throughout with some HW relict shear zones. Defects are generally planar or irregular, slightly rough, open to closed. LP: 0-5° (6/m); PI-Un/Ro-Sm, CD-OP. LP: 20° (3/m); PI-Un/Ro-Sm, CD-OP. Js: 80-90° (1/m); PI-Un/Ro-Sm, CD-OP.		HW				Clay seam	
36			100 (96)		<b>Interbedded SILTSTONE and SANDSTONE</b> Fine to medium grained sedimentary rock composed interbeds of sand and silt sized particles. SW: Pale grey, fine to medium grained, medium strength with occasional HW and XW clayey seams. Bedding at 0-5°.		HW				Relict shear zone	
37	178.43		100 (81)		Defects: Lamination partings at 0-5° (5/m) Joints at 70-90° (2/m) Defects are generally planar or irregular, slightly rough to rough, open to closed.		MW				HW Relict shear zone	
38											HW Relict brecciated zone	
39											HW Relict shear zone	
40											Fractured coal layer	
											Sandstone bed	
											XW Clay laminations	
											VWP installed	
											XW Clay laminations	

REMARKS \*See point load test results for details of this test

LOGGED BY  
TAH

# ENGINEERING BOREHOLE LOG

FOR GEOTECHNICAL TERMS AND  
SYMBOLS REFER FORM F:GEOT 017/7-2014

BOREHOLE No BH2A  
SHEET 5 of 5  
REFERENCE No 11526

PROJECT Mt Whitestone: Slope Instability Investigation - Preliminary Inclinator Boreholes  
LOCATION Gatton-Clifton Rd, RHS table drain, approx Ch 15.22km COORDINATES 416202.9 E; 6937824.3 N  
PROJECT No FG6128 SURFACE R.L. 215.63m PLUNGE \_\_\_\_\_ DATE STARTED 27/11/13 GRID DATUM MGA94  
JOB No \_\_\_\_\_ HEIGHT DATUM AHD BEARING \_\_\_\_\_ DATE COMPLETED 2/12/13 DRILLER Northcoast

DEPTH (m)	R.L. (m)	AUGER CASING WASH BORING CORE DRILLING	RQD ( ) %	SAMPLE	MATERIAL DESCRIPTION	LITHOLOGY	USC WEATHERING	INTACT STRENGTH (AS1726)	DEFECT SPACING (AS1726)	GRAPHIC LOG	ADDITIONAL DATA AND TEST RESULTS	SAMPLES TESTS
40	175.63											
41			100 (100)		Interbedded SILTSTONE and SANDSTONE SW: (Cont'd)		SW				<input type="checkbox"/> HW layer <input type="checkbox"/> Sandstone interbeds <input type="checkbox"/> Sandstone interbed	
42	173.63		100								Is(50) = 0.14MPa; * Is(50) = 0.34MPa; * <input type="checkbox"/> Washbore - no sample retrieved. <input type="checkbox"/> Inclinator installed	x o
43					Borehole terminated at 42m							
44												
45												
46												
47												
48												
49												
50												

REMARKS \*See point load test results for details of this test

LOGGED BY  
TAH



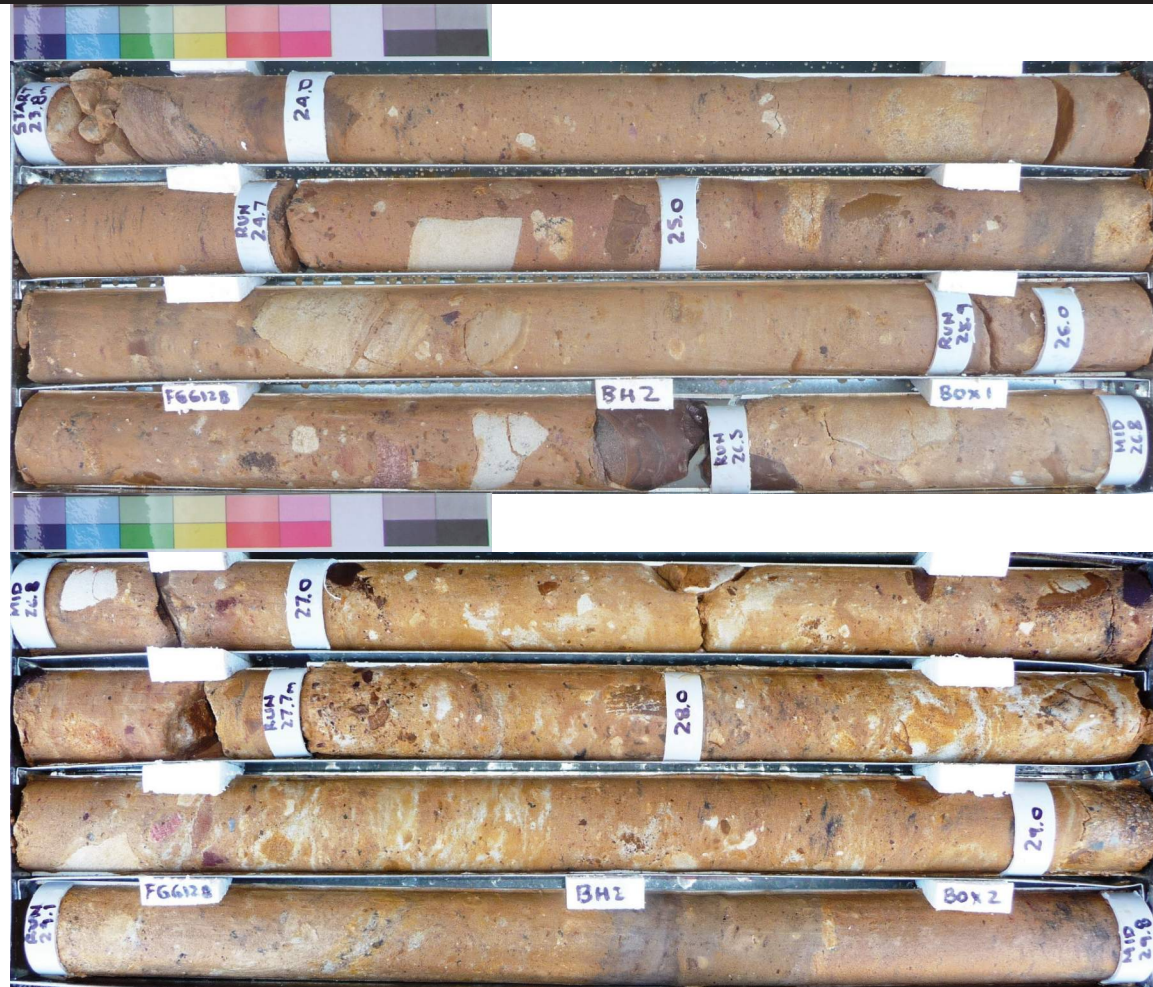
# CORE PHOTO LOG

DEPARTMENT OF TRANSPORT & MAIN ROADS  
Geotechnical Branch  
35 Butterfield Street, HERSTON Qld 4006  
Phone 07 3066 3336



Department of  
Transport and Main Roads

Project Name	Gatton-Clifton Rd: Investigation of Instability at Mt Whitestone		
Project No	FG 6128	Date	27/11/13
Borehole No	BH 2A	TMR H No	11526
Location	RHS table drain (Middle)	Start Depth (m)	23.80
Detail		Finish Depth (m)	41.80
Chainage	Ch 15.04 - 15.4km	Submitted By	J. Lopez
Remarks			



SCALE 1:5

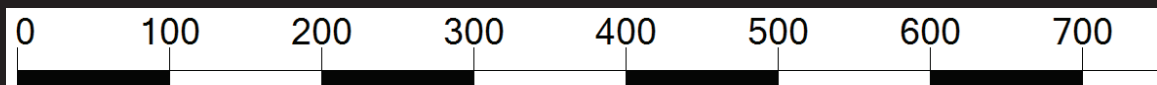
# CORE PHOTO LOG

DEPARTMENT OF TRANSPORT & MAIN ROADS  
Geotechnical Branch  
35 Butterfield Street, HERSTON Qld 4006  
Phone 07 3066 3336



Department of  
Transport and Main Roads

Project Name	Gatton-Clifton Rd: Investigation of Instability at Mt Whitestone		
Project No	FG 6128	Date	27/11/13
Borehole No	BH 2A	TMR H No	11526
Location	RHS table drain (Middle)	Start Depth (m)	23.80
Detail		Finish Depth (m)	41.80
Chainage	Ch 15.04 - 15.4km	Submitted By	J. Lopez
Remarks			



SCALE 1:5



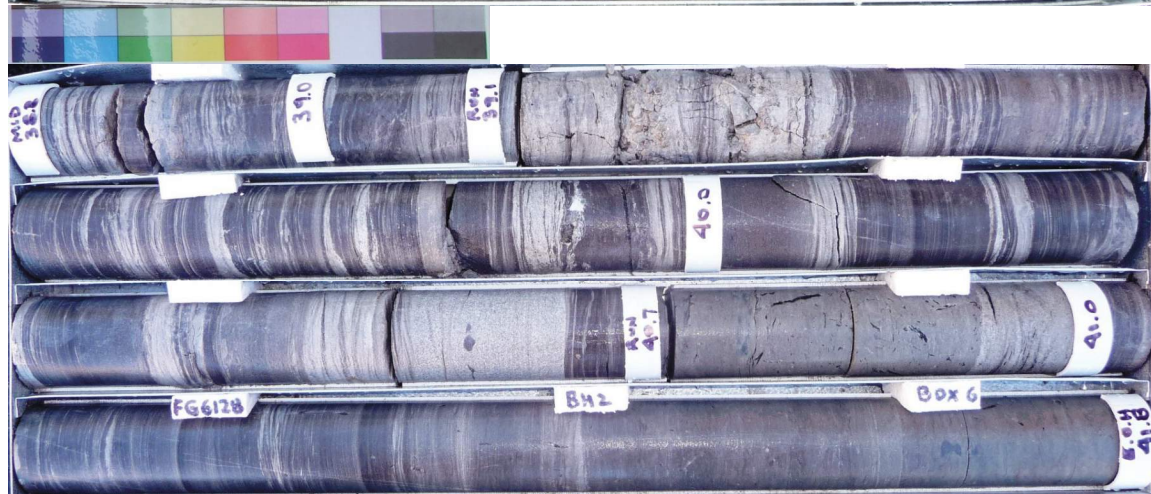
# CORE PHOTO LOG

DEPARTMENT OF TRANSPORT & MAIN ROADS  
Geotechnical Branch  
35 Butterfield Street, HERSTON Qld 4006  
Phone 07 3066 3336



Department of  
Transport and Main Roads

Project Name	Gatton-Clifton Rd: Investigation of Instability at Mt Whitestone		
Project No	FG 6128	Date	27/11/13
Borehole No	BH 2A	TMR H No	11526
Location	RHS table drain (Middle)	Start Depth (m)	23.80
Detail		Finish Depth (m)	41.80
Chainage	Ch 15.04 - 15.4km	Submitted By	J. Lopez
Remarks			



SCALE 1:5