

COPYRIGHT NOTICE

This geotechnical log and its associated data (the Document) is licensed by the Queensland Department of Transport and Main Roads under the [Creative Commons Attribution 4.0 Licence](#) (CC BY 4.0). When reusing the Document, in whole or in part, please attribute the Department as follows: "*(c) State of Queensland (Department of Transport and Main Roads) 2020, licensed under the CC BY 4.0 Licence*". This licence does not apply to the Queensland Government logo or trademarks.

LIMITATION OF LIABILITY

The CC BY 4.0 Licence contains a comprehensive Disclaimer of Warranties and Limitation of Liability. In addition, please note that this Document was prepared for Departmental use only. Reuse of the Document by anyone for any other purpose could result in error and/or loss. You should obtain professional advice before making decisions based on the contents of the Document.

When reproducing any part of this Document, you must also reproduce this limitation of liability notice in addition to the italicised attribution statement above.

Retrieved from the Queensland Geotechnical Database <http://qgd.org.au/>

MAIN ROADS DEPARTMENT
ENGINEERING BORE LOG

Form 232L(a)
(P) /4/72

PROJECT.. MARYBOROUGH RAILWAY UNDERPASS FOUNDATION
INVESTIGATION

HOLE No. 6

LOCATION.. See Plan ML830A

DATUM... State

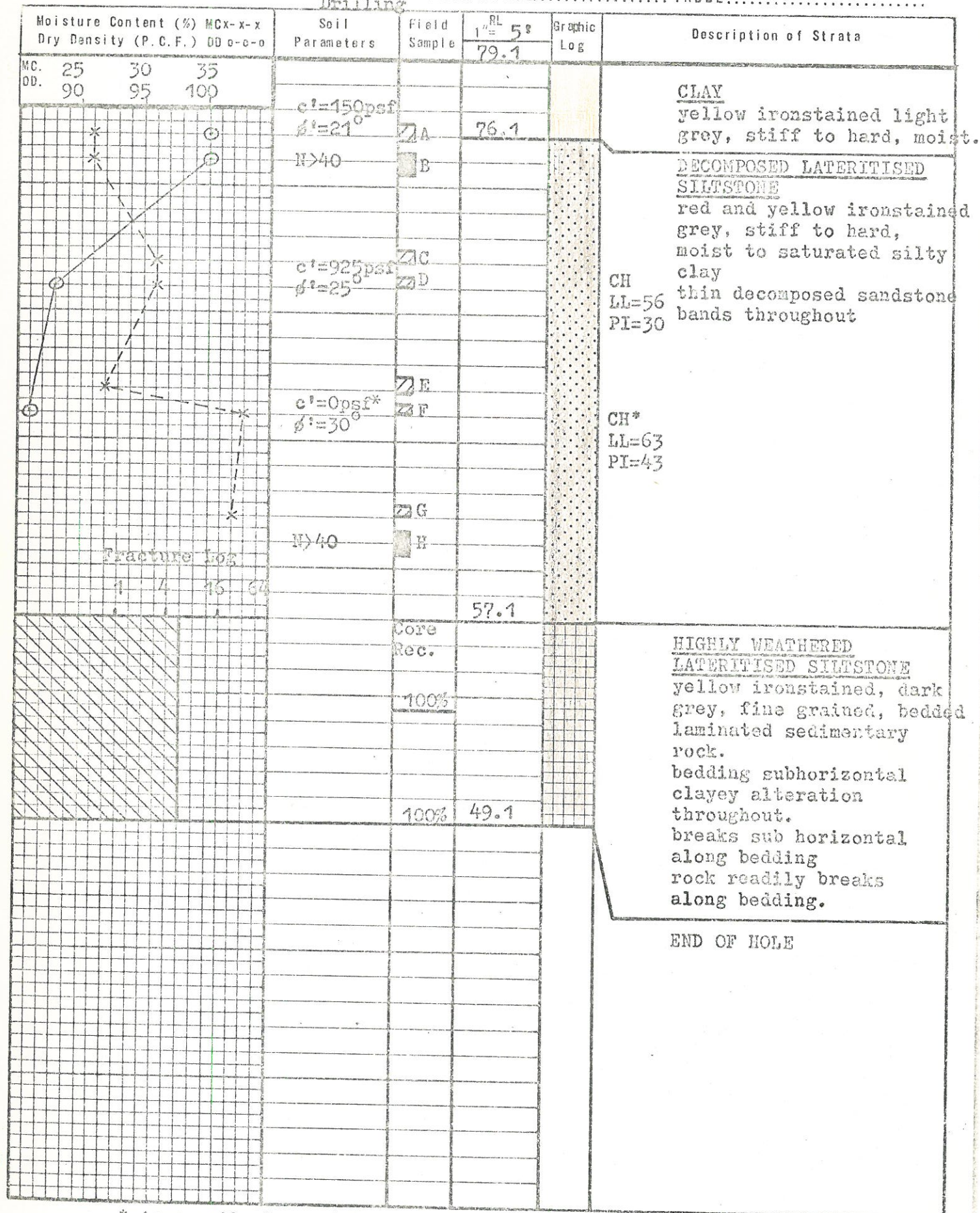
GROUND SURFACE... 79.1

JOB No 24/10D/201... PROJECT No CD1-108 REF. H. C-238

H 2898

TYPE OF DRILLING.. NX Casing.. NMLC Diamond Drilling DATE 28/5/73

WATER TABLE... 66.1



REMARKS: * Apparently inconsistent results due to sample variability.

1 1/2" TUBE

3" TUBE

S.P.T. TEST

GEOLOGIST

ENGINEER

APPROVED

DATE 30/5/73