

COPYRIGHT NOTICE

This geotechnical log and its associated data (the Document) is licensed by the Queensland Department of Transport and Main Roads under the [Creative Commons Attribution 4.0 Licence](#) (CC BY 4.0). When reusing the Document, in whole or in part, please attribute the Department as follows: "*(c) State of Queensland (Department of Transport and Main Roads) 2020, licensed under the CC BY 4.0 Licence*". This licence does not apply to the Queensland Government logo or trademarks.

LIMITATION OF LIABILITY

The CC BY 4.0 Licence contains a comprehensive Disclaimer of Warranties and Limitation of Liability. In addition, please note that this Document was prepared for Departmental use only. Reuse of the Document by anyone for any other purpose could result in error and/or loss. You should obtain professional advice before making decisions based on the contents of the Document.

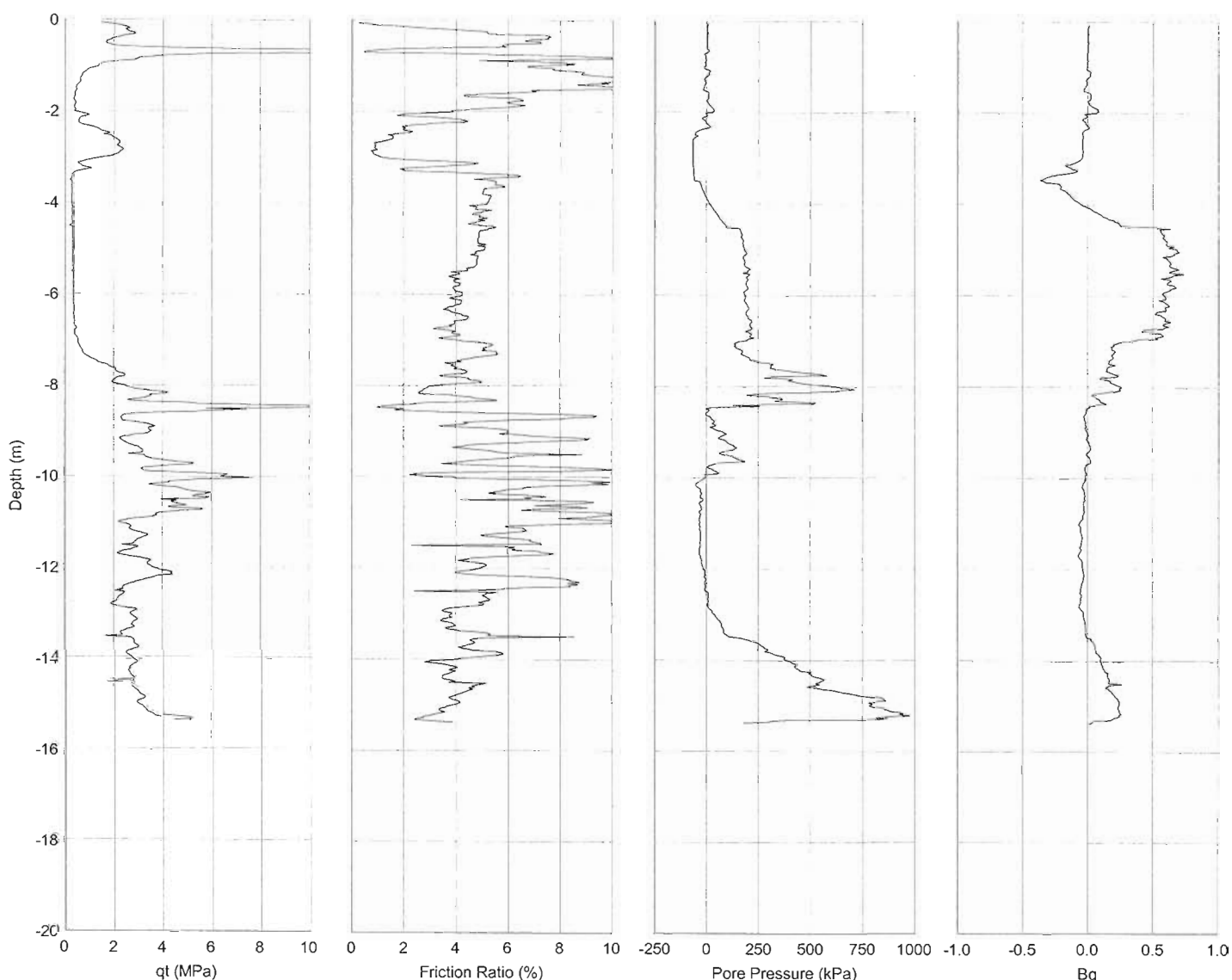
When reproducing any part of this Document, you must also reproduce this limitation of liability notice in addition to the italicised attribution statement above.


Retrieved from the Queensland Geotechnical Database <http://qgd.org.au/>

REPORT ON CONE PENETROMETER TEST

Client **MAIN ROADS**
Project **GATEWAY UPGRADE NORTH - EARLY WORKS**
Job Ref.
Location **E 509415.575, N 6971178.549**
Chainage
Sounding **CPTU11**
Test Date **21/09/2008**
Remarks **Dissipation at 5.21m**

Project No. **FP5249**
Surface RL **2.439 m**
Water Table **1.500 m**
Start Depth **0.000 m**
Refusal **15.375 m**



Date	22/01/2009	Cone Type	Piezocone	 <p>Accreditation Number: 2302 Accredited for compliance with ISO/IEC 17025 This document is issued in accordance with NATA's accreditation requirements.</p>
Checked	<i>PR</i>	Cone ID	3832	
Signatory	<i>PR</i>	Factor "a"	0.610	
		Factor "b"	0.013	
		Test Method	Q151-A	
		Report No.	FP5249/CPTU11/Q151-A	

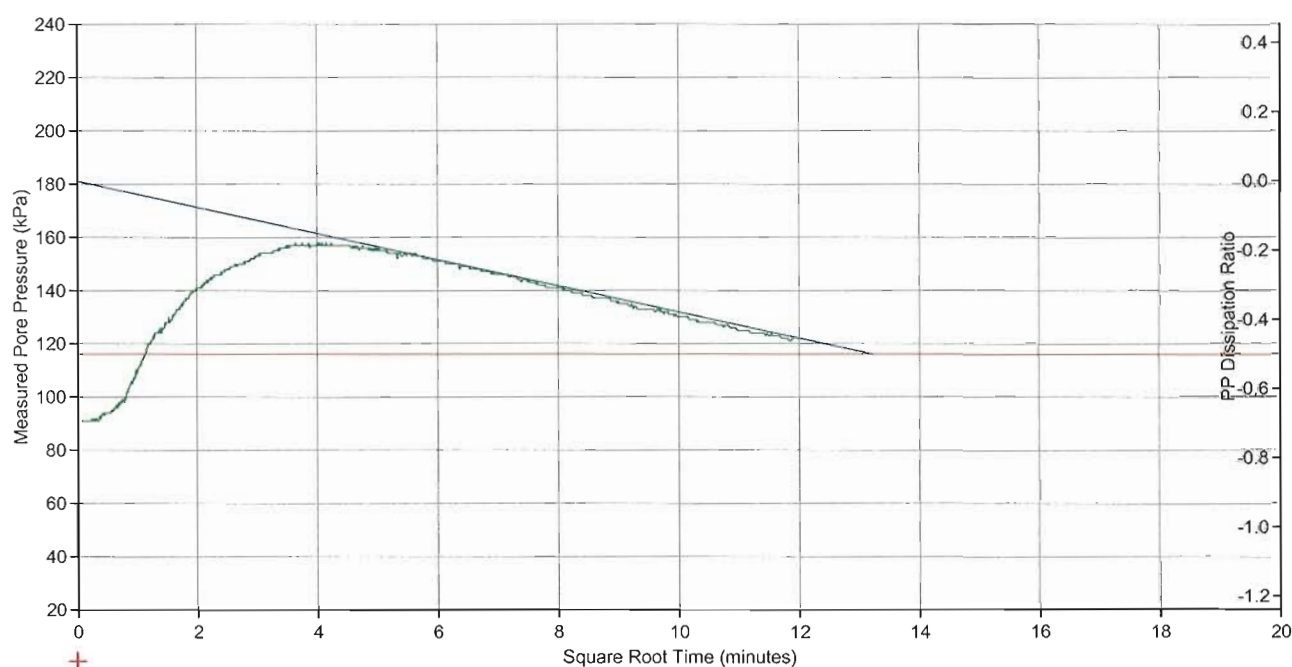
Program Version 4.03b (32bit)

REPORT ON CPT_u DISSIPATION TEST

Client **MAIN ROADS**
Project **GATEWAY UPGRADE NORTH - EARLY WORKS**
Job Ref.
Location **E 509415.575, N 6971178.549**
Chainage
Sounding **CPTU11D**
Test Date **22/09/2008**
Remarks

Project No. **FP5249**
Surface RL **2.439 m**
Water Table **0.000 m**
Start Depth **3.000 m**

Water Table was not measured and is assumed.



Depth (m) **5.21**
Start Pressure (kPa) **181**
Dissipation (%) **50**
Dissipation Pressure (kPa) **116**
Time for Dissipation (min) **175**

Date	22/01/2009	Cone Type	Piezocone
		Cone ID	3832
Checked	<i>PR</i>	Factor "a"	0.610
		Factor "b"	0.013
Signatory	<i>PR</i>	Test Method	Q151-A
		Report No.	FP5249/CPTU11D/Q151-A



Accreditation Number: 2302
Accredited for compliance
with ISO/IEC 17025

This document is issued in
accordance with NATA's
accreditation requirements.

Program Version 4.03b (32bit)