

COPYRIGHT NOTICE

This geotechnical log and its associated data (the Document) is licensed by the Queensland Department of Transport and Main Roads under the [Creative Commons Attribution 4.0 Licence](#) (CC BY 4.0). When reusing the Document, in whole or in part, please attribute the Department as follows: "*(c) State of Queensland (Department of Transport and Main Roads) 2020, licensed under the CC BY 4.0 Licence*". This licence does not apply to the Queensland Government logo or trademarks.

LIMITATION OF LIABILITY

The CC BY 4.0 Licence contains a comprehensive Disclaimer of Warranties and Limitation of Liability. In addition, please note that this Document was prepared for Departmental use only. Reuse of the Document by anyone for any other purpose could result in error and/or loss. You should obtain professional advice before making decisions based on the contents of the Document.

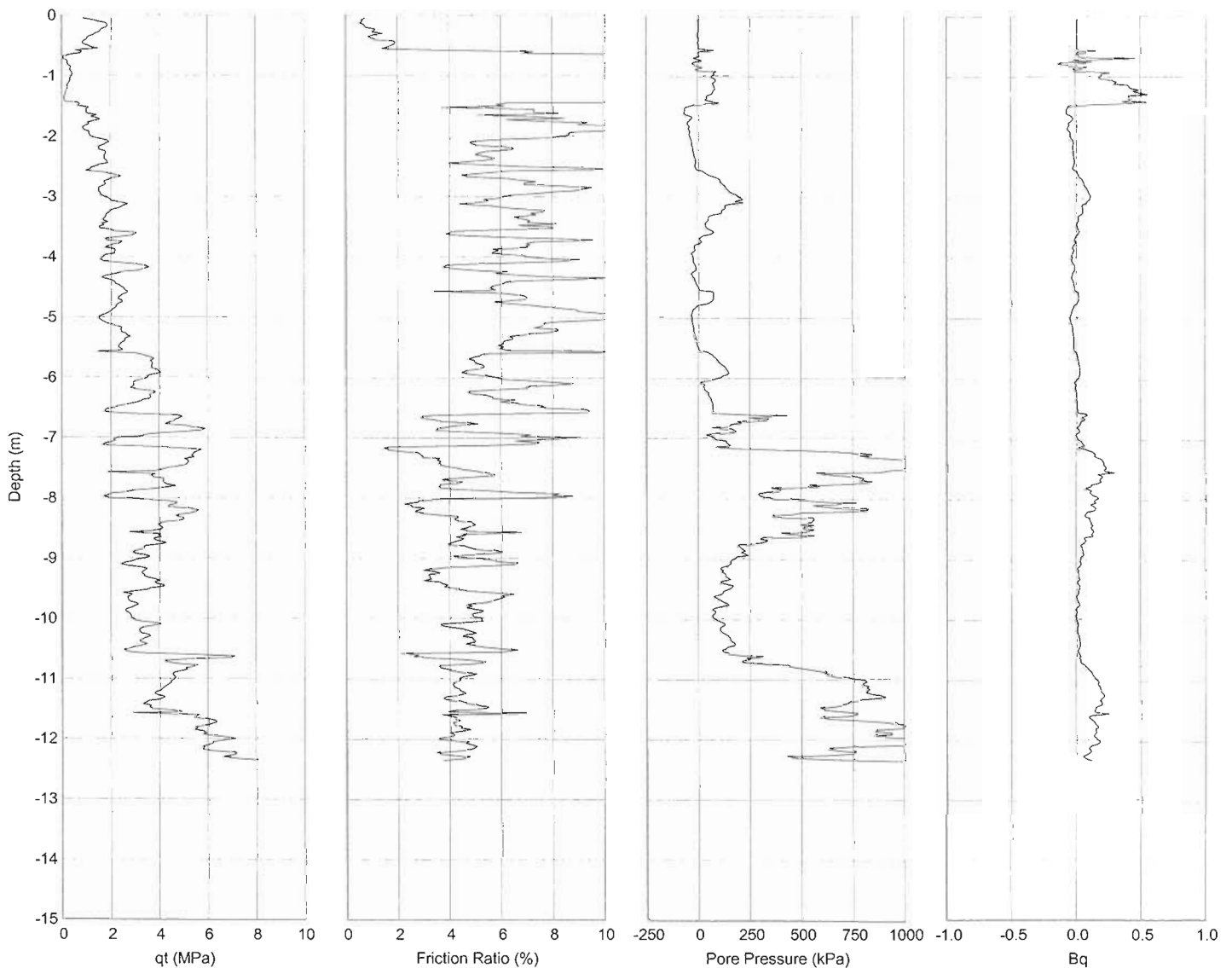
When reproducing any part of this Document, you must also reproduce this limitation of liability notice in addition to the italicised attribution statement above.

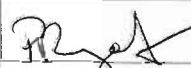

Retrieved from the Queensland Geotechnical Database <http://qgd.org.au/>

REPORT ON CONE PENETROMETER TEST

Client **MAIN ROADS**
Project **GATEWAY UPGRADE NORTH - EARLY WORKS**
Job Ref.
Location **E 509607.160, N 6973252.477**
Chainage
Sounding **CPTU17**
Test Date **24/09/2008**
Remarks

Project No. **FP5249**
Surface RL **2.078 m**
Water Table **1.200 m**
Start Depth **0.000 m**
Refusal **12.350 m**



Date	22/01/2009	Cone Type	Piezocone
Checked		Cone ID	3832
Signatory		Factor "a"	0.610
		Factor "b"	0.013
		Test Method	Q151-A
		Report No.	FP5249/CPTU17/Q151-A



Accreditation Number: 2302
Accredited for compliance
with ISO/IEC 17025

This document is issued in
accordance with NATA's
accreditation requirements.

Program Version 4.03b (32bit)